

Phylogenetic study of the *Schismatoglottis Nervosa* Complex (Araceae: Schismatoglottideae)

A.P.J. Ting^{1,2}, S.Y. Wong¹, J. Jamliah¹ and P.C. Boyce³

¹Department of Plant Science & Environmental Ecology,
Faculty of Resource Science & Technology, Universiti Malaysia Sarawak,
94300 Kota Samarahan, Sarawak, Malaysia

²april_day15@yahoo.com

³Pusat Pengajian Sains Kajihayat (School of Biological Sciences),
Universiti Sains Malaysia, 11800 USM, Pulau Pinang, Malaysia

ABSTRACT. The *Schismatoglottis Nervosa* Complex (Araceae: Schismatoglottideae) currently comprises 10 species: *Schismatoglottis adoceta* S.Y.Wong, *S. elegans* A.Hay, *S. liniae* S.Y.Wong, *S. tessellata* S.Y.Wong, *S. ulusarikeiensis* S.Y.Wong, *S. matangensis* S.Y.Wong, *S. simonii* S.Y.Wong, *S. turbata* S.Y.Wong, and *S. nervosa* Ridl., occurring in Borneo, with each endemic to a specific locality and most to a particular geology; and one species (*S. brevicuspis* Hook.f.) widespread in Peninsular Malaysia and Sumatera, where it is restricted to granites. Based on analysis of the *matK* region, a preliminary biogeographical hypothesis for the origins and subsequent taxogenesis of the Nervosa Complex is presented. This study also provides insight into possible evolution of localised mesophytic endemics in everwet, humid, and perhumid megathermal Sundaic forests. Two clades are resolved: one north of, and another south of, the Lupar Divide.

Keywords. Araceae, biogeography, Borneo, *matK*, *Schismatoglottis Nervosa* Complex, vicariance

Introduction

Geology and tectonics of Borneo

Borneo is the third largest island in the world and the second largest tropical island after New Guinea. Borneo is situated in a tectonically intricate region between three marginal basins: the South China, Sulu and Celebes Seas (Hall et al. 2008), the latter two on the eastern edge of the Sunda Shelf. Borneo has a complex geological history having been formed by Mesozoic accretion of oceanic crustal material (ophiolite), island arcs and microcontinental fragments accreted to the Palaeozoic continental core of the now Schwaner Mountains (Hutchison 1989; Moss & Wilson 1998; Hall et al. 2008). Despite this rather active formation, Borneo is now a stable area with little or no seismic activity, and has no active volcanoes (Hall 2002; Hall et al. 2008).

Plant endemism in Borneo

Borneo is frequently cited—rightly although nowadays somewhat repetitively—as one of the world's areas of 'mega'-biodiversity. With a flora comprising at least 3000

tree species alone (MacKinnon et al. 1996; Slik et al. 2003), Borneo's floristic patterns are significantly correlated with topography and geography (Slik et al. 2003). Present-day floristic patterns are probably influenced by Pleistocene glaciations and are suggested to be of recent emergence after the Pleistocene glacial period. The Southeast Asian mainland and Sumatera were formerly connected to Borneo by land bridges during the Pleistocene glacial (Morley 2000) and the emergence (more accurately, re-emergence) of lowland humid forest is almost certainly owing to rapid radiation of the relictual fragmentary floras from southeast Borneo (Meratus), and/or expansion of forest remnants from the Riau Pocket (see Corner 1960; Ashton 2005). It has also been suggested that Pleistocene refugia extended to north and northwest Borneo (Ashton 1972; Wong 1998), providing yet other points of taxon radiation.

It is estimated that c. 37% of Borneo's 15,000 vascular plant species are endemic (Roos et al. 2004; Welzen et al. 2005), although these figures are likely both underestimates given that studies are consistently revealing that a high percentage of the mesophytic flora appears to be endemic, and includes a great many novelties, e.g., the findings in Zingiberales alone: Theilade & Mood (1997, 1999), Nagamasu & Sakai (1999) and Takano & Nagamasu (2007).

Sabah and Sarawak together are frequently cited to have the most endemic plant species in Borneo, notably in mountainous areas (Moss & Wilson 1998). Frequently it is stated that much of the plant endemism of Borneo occurs in areas of the north, west Sarawak (notably), Sabah's Crocker Range (including Kinabalu) and Trusmadi Range, the central Bornean mountain chain (the Schwaner–Muller–Iran Range), and also in the southeastern Meratus range (Mackinnon et al. 1996). However, it is important to remember that the collecting density of much of highland Borneo is almost infinitesimally small, and thus the taxonomic wealth of the numerous smaller and isolated upland areas (e.g., the Kalimantan Kapuas Hilir, and flanking (Sarawak) Klingkang range, the Kapuas Hulu, Sambiliung, etc.) has yet to be sampled in any scientifically meaningful way. Furthermore, increasingly it is becoming apparent that the *lowland* areas have, despite their frequently degraded condition, still an extraordinary untapped reserve of novel taxa, many with highly restricted, often geologically obligate, ranges.

The *Schismatoglottis Nervosa* Complex

Since 2000, the genus *Schismatoglottis* has been the focus of attention aimed at resolving both its taxonomy and phylogeny (Hay & Yuzammi 2000). Wong (2010) delimited the Nervosa complex by the presence of aromatic vegetative tissues (terpenoids), longitudinally ribbed petioles, and leaf blades with tessellate tertiary venation. Seven novel species additional to the two (*Schismatoglottis nervosa* and *S. elegans*) recognised by Hay & Yuzammi (2000) were proposed. In addition, *S. brevicuspis* was recognised as belonging to the Nervosa complex.

Thus, as now defined the Nervosa Complex comprises 10 described species. A further four species await description. *Schismatoglottis nervosa* and *S. elegans* are

restricted to Karst limestones in the southwest and northeast of Sarawak, respectively; *Schismatoglottis matangensis* and *S. turbata* are species of sandstones, with *S. matangensis* occurring on soft sandstones under perhumid moist forest, while *S. turbata* occurs in humid forest where it is restricted to the tops of small Bornhardts comprised of very hard sandstone. *Schismatoglottis adoceta*, *S. tessellata* and *S. ulusarikeiensis* are restricted to shales, *S. simonii* is unusual in that it occurs on both limestones (the type) and sandstones, while *S. liniae* and *S. brevicuspis* are granite obligates. Of the four species awaiting formal description, one is endemic to basalt in East Sabah, and one each to limestone at Mulu, shale in west Kapit, and limestone in southern central Bintulu.

This study investigates taxonomic relatedness within the Nervosa Complex and possible correlation between phytogeographical patterns and phylogeny of the complex, and presents a hypothesis of taxogenesis of the localised endemics.

Materials and methods

Sample collection and outgroup selection

The ingroup for the analysis consisted of 13 species (each with one accession, except for *S. simonii*, from two localities) from Sabah and Sarawak and one species from West Malaysia. Of these, 13 accessions were collected from the living collection at Semenggoh Botanical Research Centre, Kuching, Sarawak, and one accession was collected from Perak, Peninsular Malaysia, supplied through Universiti Sains Malaysia, Pulau Pinang (see Table 1). The outgroup taxon selected was *Apoballis acuminatissima* S.Y.Wong & P.C.Boyce, established as the Asian sister species to *Schismatoglottis* (Wong et al. 2010).

DNA extraction, PCR and sequencing

DNA was extracted from fresh samples using the protocol of Wong et al. (2010). The primers used for the *matK* gene region, which partially includes the 5' flanking region of the *trnK* intron were: *matK* 19F (Gravendeel et al. 2001), and *matK* 2R (Steele & Vilgalys 1994).

Polymerase Chain Reaction (PCR) amplifications were performed in a Biometra Tgradient thermal cycler. PCR conditions included an initial 2-min denaturation at 95°C, 35–40 cycles of 1 min at 95°C (denaturation), 1 min at 50–60°C (annealing), and 2 min at 72°C (extension), followed by a final 10-min extension at 72°C. PCR products were purified using a PureLink™ PCR Purification Kit (Invitrogen Corp.). The purified products were then sent to a commercial company for sequencing by including two internal primers: 390F and 1326R (Cuénoud et al. 2002).

Data analyses

Sequences were assembled and manually aligned using BioEdit Sequence Alignment Editor v7.0.5 (Hall 1999). Parsimony analysis was performed with PAUP* 4.0b10 (Swofford 2000) using PaupUp graphical interface (Calendini & Martin 2005) with

Table 1. GenBank accessions, vouchers and locality information for species of the *Schismatoglottis Nervosa* Complex (Araceae: Schismatoglottideae) in the present study.

Species	GenBank accession	Voucher no.	Location	Geology
<i>Schismatoglottis simonii</i>	JN570740	AR174	Sarawak, Serian, Gunung Ampungan	limestone
<i>Schismatoglottis nervosa</i>	JN570742	AR944	Sarawak, Bau, Gunung Bidi	limestone
<i>Schismatoglottis tessellata</i>	JN570748	AR1087	Sarawak, Kapit, Taman Rekreasi Sebabai	shales
<i>Schismatoglottis adoceta</i>	JN570739	AR1408	Sarawak, Kapit, Belaga	shales
<i>Schismatoglottis ulusarikeiensis</i>	JN570746	AR1579	Sarawak, Sarikei, Ulu Sarikei	shales
<i>Schismatoglottis simonii</i>	JN570751	AR1686	Sarawak, Serian, Mongkos	shales
<i>Schismatoglottis matangensis</i>	JN570741	AR1864	Sarawak, Matang, Kubah National Park	sandstone
<i>Schismatoglottis elegans</i>	JN570747	AR1877	Sarawak, Miri, Niah National Park	limestone
<i>Schismatoglottis sp. nov. aff. nervosa</i>	JN570744	AR1930	Sarawak, Miri, Mulu	limestone
<i>Schismatoglottis liniae</i>	JN570743	AR2062	Sarawak, Lundu, Gunung Gading	granite
<i>Schismatoglottis sp. nov. aff. nervosa</i>	JN570749	AR2078	Sarawak, Bintulu, Bukit Sarang	limestone
<i>Schismatoglottis turbata</i>	JN570750	AR2143	Sarawak, Lundu, Sempadi	sandstone
<i>Schismatoglottis sp. nov. aff. nervosa</i>	JN570745	AR2482	Sabah, Tawau	basalt
<i>Schismatoglottis brevicuspis</i>	GQ220910	AR2677	Peninsular Malaysia, Perak	granite

all characters treated as “unord” and with equal weight. Gaps were treated as missing values. Random addition sequence was used as starting point and 10000 replicates retained. Branch-swapping was undertaken using the tree-bisection-reconnection (TBR) algorithm. No more than 3 trees of score (length) \geq to 1 were saved for each replicate. Steepest descent option was not in effect and branches were collapsed if maximum branch length was zero. The “MulTrees” option was in effect and topological constraints not enforced. 10000 bootstrap replicates were completed. The consistency index (CI), homoplasy index (HI), retention index (RI) and rescaled consistency index (RCI) were calculated with one of the most-parsimonious trees (MPTs).

Results

Unaligned sequences of the *matK* region of the ingroup taxa ranged from 1448 to 1740 bp. The final length for the aligned sequences comprised 1436 characters which

included two additions in *S. simonii* AR1686 (from 626 to 631bp) and *A. acuminatissima* (from 1505 to 1510bp). To align the sequences with the outgroup, 11 gaps were added. 3 variable sites were found from 200bp to 1400bp. From the 1436 bps, 1413 (98%) characters were constant, 14 (1%) of them were parsimony-uninformative and 9 (1%) of them were parsimony-informative characters.

One of 28 most parsimonious trees was selected (Fig. 1). There are two apparent clusters within the Nervosa Complex with weakly supported bootstrap values: *S. simonii* AR1686, *S. adoceta* AR1408, *S. tessellata* AR1087, *S. sp. nov. aff. nervosa* AR2078, *S. brevicuspis* AR2677, *S. ulusarikeiensis* AR1579 and *S. elegans* AR1877 (bootstrap 43%); and *S. nervosa* AR944, *S. simonii* AR174, *S. matangensis* AR1864, *S. liniae* AR2062, *S. turbata* AR2143, *S. sp. nov. aff. nervosa* AR1930 and AR2482 (bootstrap: 50%). Within these, however, *Schismatoglottis adoceta*, *S. brevicuspis*, *S. tessellata* and *S. sp. nov. aff. nervosa* AR2078 form a group with strong bootstrap support (100%), and this is weakly grouped (bootstrap: 36%) with *S. simonii* AR1686. *Schismatoglottis ulusarikeiensis* and *S. elegans* are sister to this clade (bootstrap: 64%). *Schismatoglottis nervosa*, *S. simonii* AR174, *S. matangensis*, *S. liniae* and *S. turbata* form a strongly supported clade (bootstrap: 100%). The *S. sp. nov. aff. nervosa* AR1930 and *S. sp. nov. aff. nervosa* AR2482 clade is also strongly supported (bootstrap: 100%).

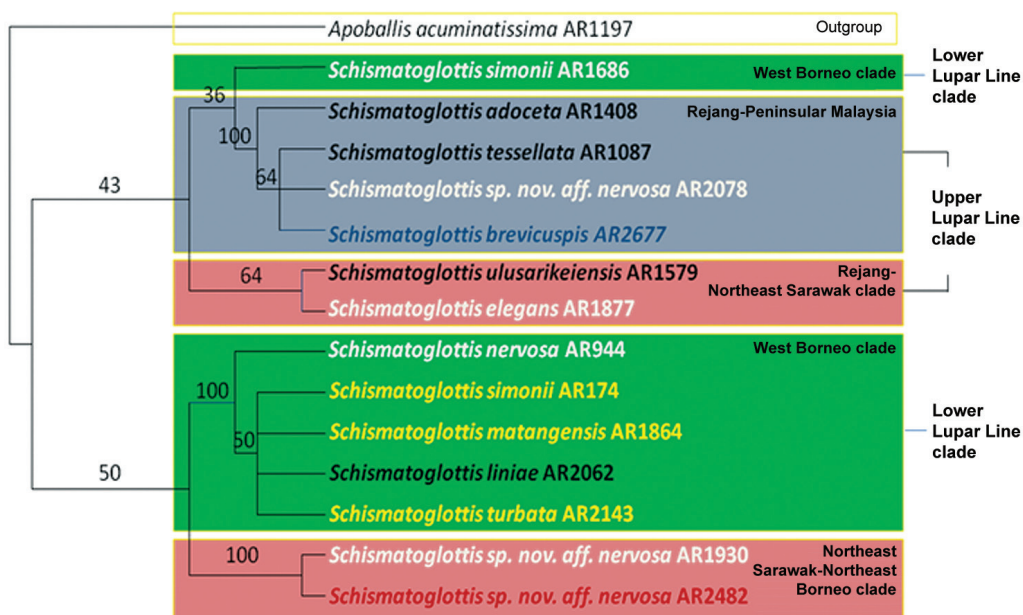


Fig. 1. One of 28 most parsimonious trees for the *Schismatoglottis* Nervosa complex based on the *matK* region. Tree length 26. Consistency index (CI) 0.885. Retention index (RI) 0.870. Rescaled consistency index (RC) 0.769. Homoplasy index (HI) 0.115. Although some clusters are weakly supported, potential clade relationships that may correspond to either side of the Lupar Line are indicated as hypotheses for continuing work.

Discussion

The Nervosa Complex comprises two general clusters: (((Rejang-Peninsular Malaysia), West Borneo) Rejang-NE Borneo) and (W Borneo, NE Sarawak-NE Borneo). Apparently, the cluster radiations are separated to below and above the Lupar Divide. The upper Lupar Divide clade comprises *S. adoceta* and *S. tessellata* (both Kapit, on shales), *S. sp. nov. aff. nervosa* AR2078 (Bintulu), and *S. elegans* in Miri. The Lower Lupar Line clade comprises *Schismatoglottis simonii* AR1686, *S. nervosa*, *S. simonii* AR174, *S. matangensis*, *S. liniae*, and *S. turbata*. The Lupar Line was an active convergent plate margin between the Late Cretaceous (65–99mya) to Palaeocene (54.8–65mya), with the margins extending through Engkilili and Lubok Antu (Tan 1979), approximately in line with the saddle that currently separates the Kapuas Hilir and Kapuas Hulu mountains. Hutchison (1996) stated that the sediments of the Lupar Line are the result of fluvial system deposition from the interior of a proto-Sundaland. The Lupar Formation comprises turbidites (deposits comprising rhythmic alternations of fine-grained, graded sandstones and shale beds) and igneous rocks (Honza et al. 2000). Active subduction of the oceanic crust occurred during the Cretaceous (65–144 mya) or early Tertiary (33.7–65 mya). The Rejang-Peninsular Malaysia clade (*S. adoceta*, *S. tessellata* and *S. sp. nov. aff. nervosa* AR2078, *S. brevicuspis*), is estimated to have evolved from the last common ancestor during the Early Tertiary (33.7–65 mya). *Schismatoglottis adoceta*, *S. tessellata* and *S. sp. nov. aff. nervosa* AR2078 are in the Belaga and Lupar formations in Sarawak and Embaluh Group and Selangkai Formations in Kalimantan, circumscribed in the South by the Lupar Line ophiolite and in the North by the Bukit Mersing Line (Hutchison 1989), The Rajang Group comprises turbidite sedimentation dating from the Late Cretaceous (65–99 mya) to Late Eocene (33.7–41.3mya), formed by accretion at a subduction trench (Honza et al. 2000). Bedding dips are generally southward, but become younger northward. Our preliminary results also suggest that the Belaga might act as geographical barrier for the distribution of *S. simonii*, *S. tessellata*, *S. sp. nov. aff. nervosa* AR2078, and *S. adoceta*. *Schismatoglottis adoceta* and *S. tessellata* are found on shales, whereas *S. sp. nov. aff. nervosa* AR2078 is locally restricted to limestones. The inclusion of *S. brevicuspis* (granite, Perak, Peninsular Malaysia) may be explicable as a relict of the former Riau Pocket flora (Corner 1960), running from present-day Terengganu to north-east Borneo, and might in former times have provided a corridor of everwet “stepping stones”. Indeed, morphologically, *S. simonii* is morphologically proximate to *S. sp. nov. aff. nervosa* AR2078.

Schismatoglottis ulusarikeiensis is grouped with *S. elegans* to form the Rejang-NE Sarawak cluster/clade. *Schismatoglottis ulusarikeiensis* occurs on shales at Ulu Sarikei, while *S. elegans* is restricted to the Niah limestones at Gunung Subis, which are composed of limestone from the Tangap Formation (Hazebroek & Abang Kashim 2000). The southern part of the Niah system consists of sandstone from the Nyalau Formation. The Subis Limestone was formed by reefs, coralline algae and tiny shellfish of about 23 mya (Hazebroek & Abang Kashim 2000).

The West Borneo clade comprises *S. nervosa*, *S. simonii*, *S. matangensis*, *S. liniae* and *S. turbata*, and is considered to be perhaps Middle Eocene (33.7–54.8 mya) in origin. The sediments on which two of the species (*S. matangensis* and *S. turbata*) occur are of Eocene origin (Moss & Wilson 1998). However, *S. nervosa* is restricted to the Bau Limestone, which are Upper Jurassic (180–206mya) (Wolfenden 1965), although its origin is dependent on when the Bau limestones emerged. *Schismatoglottis matangensis*, *S. simonii* AR174 and *S. turbata* are restricted to sandstones but on separate localities and differing ecologies: *S. matangensis* is found on soft sandstones under perhumid moist forest in Matang, Kuching, *S. simonii* AR174 on sandstone in Gunung Ampungan, Serian, while *S. turbata* is restricted to micro-Bornhardts comprised of very hard sandstone in Lundu. *Schismatoglottis liniae* is restricted to granite beneath perhumid forest at Gunung Gading, Lundu.

Schismatoglottis sp. nov. aff. *nervosa* AR1930 is restricted to the Mulu limestones. The Mulu Formation comprises Palaeocene (54.8–65mya) to Eocene (33.7–54.8mya) miogeoclinal (non-volcanic) formations of limestone, sandstone, shale and slate (Hutchison 1989), suggesting the as-yet undescribed species might have evolved during the Eocene. *Schismatoglottis* sp. nov. aff. *nervosa* AR2482, is restricted to basalt outcrops at Bukit Quoin, Tawau (E Sabah), predominantly the result of young volcanism: the Tawau-Gunung Wullersdorf area is predominantly composed of basaltic-andesite which resembles the Pliocene (1.8–5.3mya) eruptions of the Mostyn Estate of Kunak (Hutchison 2005). Bukit Quoin is further considered a young volcanic edifice as the volcanic rocks have weathered only to a depth of 6m (Kirk 1962), suggesting that the volcanism of the Tawau area ceased during the Quaternary. Although *Schismatoglottis* sp. nov. aff. *nervosa* AR1930 and *S. sp. nov. aff. nervosa* AR2482 are sister taxa; *S. sp. nov. aff. nervosa* AR2482 occurs on the young basalts, suggesting an adaptation that may have occurred recently (probably during Pliocene or Pleistocene).

Conclusion

The *Schismatoglottis* Nervosa complex diversified in Borneo with one widespread species in West Malaysia to Sumatera. The Bornean local endemism of the complex is unique with each species being adapted to their geological localities. This seems to be correlated with speciation radiations and numerous vicariance events. Analyses of *matK* data resolves the *Schismatoglottis* Nervosa complex into two apparent clusters, one above and one below the Lupar Divide: a Rejang-Peninsular Malaysia clade and a W Borneo clade, with the exception of two species from NE Sarawak-NE Borneo that grouped with species from W Borneo. Recent and rapid radiation of the Nervosa Complex in Borneo is perhaps owing to vicariance events from spatial and temporal isolations, combined with geological and ecological factors. On-going analyses involving further gene regions and mapping of morphological and ecological data are being undertaken to better resolve incongruences.

ACKNOWLEDGEMENTS. The first author is grateful to the award of a bursary by the Singapore Botanic Gardens to enable her to travel to present her paper at the 8th Flora Malesiana Symposium, August 2010. The paper is part of the first author's on-going MSc study on the Araceae of Borneo and is partially funded by the Ministry of Higher Education, Malaysia by fundamental research grant scheme vote: FRGS/01(12)/709/2009(25). Research and fieldwork in Borneo is, most recently, under Sarawak Forestry Department Research Permit No. NPW.907.4.4(V)-77 & Park Permit No. 34/2009. The continuing collaboration and support of the Forest Department Sarawak are gratefully acknowledged.

References

- Ashton, P.S. (1972) The Quaternary geomorphological history of western Malesia and lowland forest phytogeography. In: Ashton, P.S. & Ashton, M. (eds) *The Quaternary era in Malesia* miscellaneous ser. no. 13, pp. 35–49. Hull: University of Hull, Department of Geography.
- Ashton, P.S. (2005) *Lambir's Forest: The World's Most Diverse Known Tree Assemblage?* In: Roubik, D.W., Sakai, S. & Abang A. Hamid Karim (eds) *Pollination Ecology and the Rain Forest: Sarawak Studies*, pp. 191–216. New York: Springer.
- Calendini, F. & Martin, J.-F. (2005) PaupUP v1.0.3.1 A free graphical frontend for Paup* DOS software.
- Corner, E.J.H. (1960) The Malayan flora. In: R.D. Purchon (ed) *Proceedings of the Centenary and Bicentenary Congress of Biology*, pp. 21–24. Singapore: University of Malaya Press.
- Cuénoud, P., Savolainen, V., Chatrou, L.W., Powell, M., Grayer, R.J. & Chase, M.W. (2002) Molecular phylogenetics of Caryophyllales based on nuclear 18S rDNA and plastid *rbcL*, *atpB*, and *matK* DNA sequences. *Amer. J. Bot.* 89: 132–144.
- Gravendeel, B., Chase, M.W., Vogel, E.F., Roos, M.C., Mes, T.H.M. & Bachmann, K. (2001) Molecular phylogeny of *Coelogyne* (Epidendroideae; Orchidaceae) based on plastid RFLPS, *matK*, and nuclear ribosomal ITS sequences: Evidence for polyphyly. *Amer. J. Bot.* 88: 1915–1927.
- Hall, T.A. (1999) BioEdit: A user-friendly biological sequence alignment editor and analysis program for Windows 95/98/NT. *Nucleic Acids Symp. Ser.* 41: 95–98.
- Hall, R. (2002) Cenozoic geological and plate tectonic evolution of SE Asia and the SW Pacific: computer based reconstructions, model and animation. *J. Asian Earth Sci.* 20: 353–431.
- Hall, R., Hattum, M.W.A. van & Spakman, W. (2008) Impact of India-Asia collision on SE Asia: The record in Borneo. *Tectonophysics* 451: 366–389.
- Hay, A. & Yuzammi (2000) Schismatoglottideae (Araceae) in Malesia I – *Schismatoglottis*. *Telopea* 9(1): 1–177.
- Hazebroek, H.P. & Abang Kashim bin Abang Moshidi (2000) *National Parks of Sarawak*. Kota Kinabalu: Natural History Publications (Borneo).
- Honza, E., John, J. & Banda, R.M. (2000) An imbrications model for the Rajang Accretionary Complex in Sarawak, Borneo. *J. Asian Earth Sci.* 18: 751–759.
- Hutchison, C.S. (1989) *Geological Evolution of South-East Asia*. New York: Oxford University Press.
- Hutchison, C.S. (1996) The 'Rajang accretionary prism' and 'Lupar Line' problem of Borneo. In: Hall, R. & Blundell, D. (eds) *Tectonic Evolution of Southeast Asia*, Geological Society Special Publication 106, pp. 247–261. London: Geological Society.
- Hutchison, C.S. (2005) *Geology of north-west Borneo: Sarawak, Brunei and Sabah*. The Netherlands: Elsevier.

- Kirk, H.J.C. (1962) The Geology and Mineral Resources of the Semporna Peninsula North Borneo. *British Borneo Geological Survey Memoir* 14.
- Mackinnon, K., Hatta, G., Halim, H. & Mangalik, A. (1996) *The ecology of Kalimantan*, the ecology of Indonesia series III. Singapore: Periplus Editions (HK) Ltd.
- Morley, R.J. (2000) *Origin and evolution of tropical rain forests*. UK: John Wiley & Sons.
- Moss, S.J. & Wilson, M.E.J. (1998) Biogeographic implications of the tertiary paleogeographic evolution of Sulawesi and Borneo. In: Hall, R. & Holloway, J.D. (eds) *Biogeography and Geological Evolution of Southeast Asia*, pp. 133–163. The Netherlands: Backbuys Publishers.
- Nagamasu, H. & Sakai, S. (1999) *Orchidantha inouei* (Labiaceae), a new species from Borneo. *Nord. J. Bot.* 19: 149–152.
- Roos, M.C., Kessler, P.J.A., Gradstein, S.R. & Baas, P. (2004) Species diversity and endemism of five major Malesian islands: diversity-area relationships. *J. Biogeogr.* 31: 1893–1908.
- Slik, J.W.F., Poulsen, A.D., Ashton, P.S., Cannon, C.H., Kartawinata, K., Lanniari, I., Nagamasu, H., Nakagawa, M., Nieuwstadt, M.G.L. van, Payne, J., Purwaningsih, Saridan, A., Sidiyasa, K., Verburg, R.W., Webb, C.O. & Wilkie, P. (2003) A floristic analysis of the lowland dipterocarp forests of Borneo. *J. Biogeogr.* 30: 1517–1531.
- Steele K.P. & Vilgalys, R. (1994) Phylogenetic analysis of Polemoniaceae using nucleotide sequences of plastid gene *matK*. *Syst. Bot.* 19: 126–142.
- Swofford, D.L. (2000) PAUP*; Phylogenetic Analysis Using Parsimony (*and other methods), version 4. Massachusetts, Sunderland: Sinauer Associates.
- Takano, A & Nagamasu, H. (2007) *Myxochlamys* (Zingiberaceae), a new genus from Borneo. *Acta Phytotax. Geobot.* 58(1): 19–32.
- Tan, D.N.K. (1979) Lupar Valley, West Sarawak, Malaysia. *Geological Survey of Malaysia Report* 13.
- Theilade, I. & Mood, J. (1997) Five new species of Zingiber (Zingiberaceae) from Borneo. *Nord. J. Bot.* 17: 337–347.
- Theilade, I. & Mood, J. (1999) Six new species of Zingiber (Zingiberaceae) from Borneo. *Nord. J. Bot.* 19: 513–524.
- Welzen, P.C. van, Slik, J.W.F. & Alahuhta, J. (2005) Plant distribution patterns and plate tectonics in Malesia. *Biol. Skr.* 55: 199–217.
- Wolfenden, E.B. (1965) Bau mining district, West Sarawak, Malaysia (Part 1: Bau). *Geological survey Borneo region, Malaysia Bulletin* 7:1–147.
- Wong, K.M. (1998) Patterns of plant endemism and rarity in Borneo and the Malay Peninsula. In: Peng, C.-I. & Lowry II, P.P. (eds) *Rare, threatened and endangered floras of Asia and the Pacific Rim*, Monograph Series No. 16, pp. 139–169. Taiwan: Academia Sinica, Institute of Botany.
- Wong, S.Y. (2010) Studies on Schismatoglottideae (Araceae) of Borneo XIII: A revision of the *Schismatoglottis nervosa* complex. *Gard. Bull. Singapore* 62(1):177–209.
- Wong S.Y., Boyce, P.C., Ahmad Sofiman, O. & Leaw, C.P. (2010) Molecular phylogeny of tribe Schismatoglottideae based on two plastid markers and recognition of a new tribe, Philontieae, from the neotropics. *Taxon* 59(1): 117–124.

